

An aerial photograph of the Vancouver skyline and harbor. The foreground shows a dense urban area with numerous high-rise apartment buildings and some greenery. The middle ground features the city's harbor, with several large cargo ships and smaller boats. In the background, the city extends to the mountains under a clear blue sky. A large, semi-transparent white circle is overlaid on the left side of the image, containing the text.

HOTEL BLUE HORIZON

SUMMIT MEETING + BANQUET ROOMS

The sky is the limit on Level 31, The Summit Meeting + Banquet rooms. Located in the heart of downtown Vancouver, these rooms offer breathtaking, panoramic Ocean, City and Mountain Views. Take your meeting to the next level and enjoy Vancouver's natural beauty and keep your guests energized throughout the day with our wall-to-wall windows and natural lighting. The Blue Horizon's unique meeting space is the perfect location for your next event.

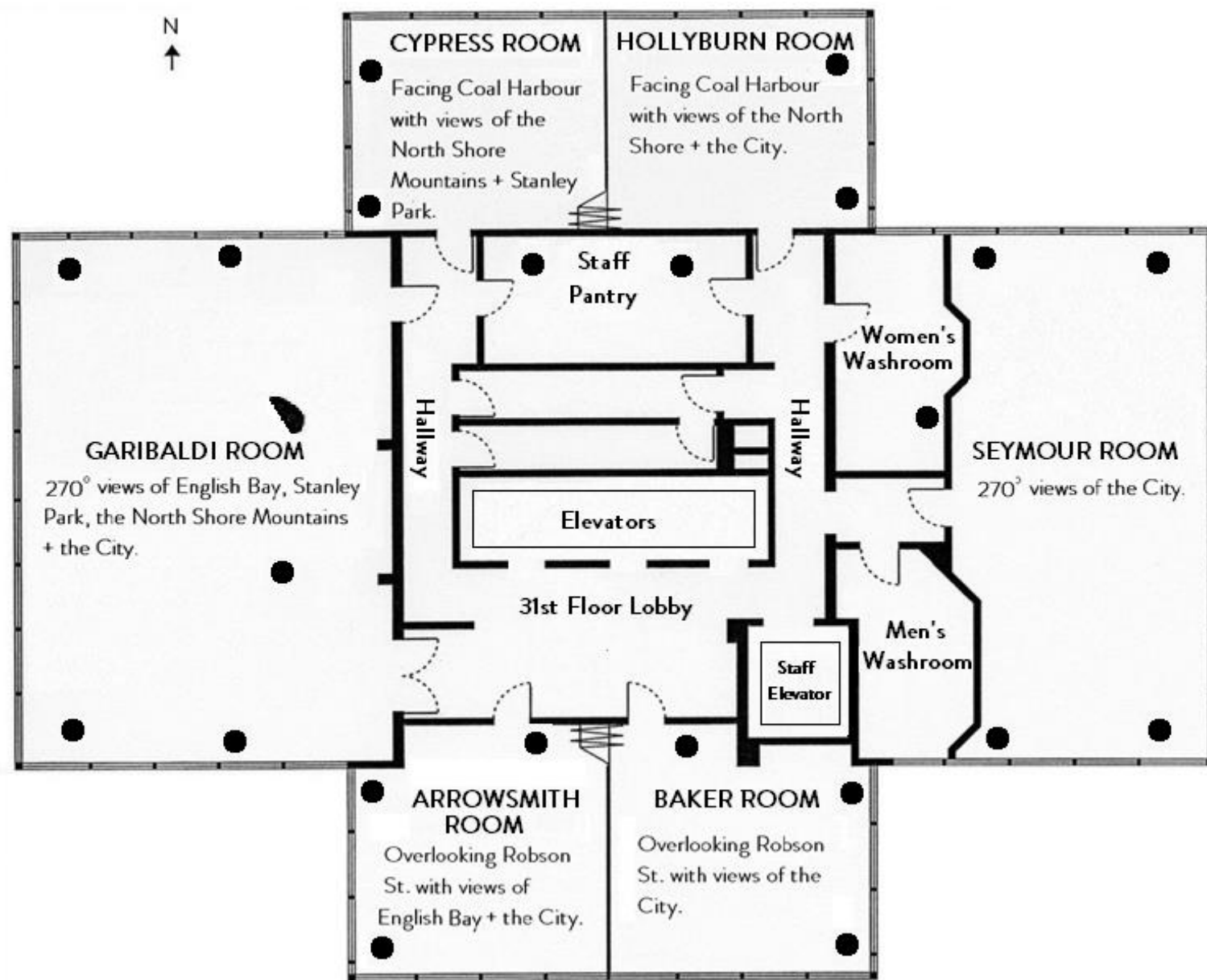
SUMMIT MEETING + BANQUET ROOMS

	GARIBALDI	SEYMOUR	BAKER	ARROWSMITH	BAKER + ARROWSMITH	CYPRESS	HOLLYBURN	CYPRESS + HOLLYBURN
Theatre	120	80	30	30	60	25	25	50
Classroom	60	30	15	15	35	12	12	25
Boardroom	40	35	16	16	36	14	14	25
U-shape	36	35	16	16	36	14	14	25
Half Rounds	45	36	15	15	30	12	12	24
Rounds	100	54	18	18	45	18	18	36
Reception	120	70	20	20	60	18	18	40

Please Note: The above list includes maximum number of attendees per room without audio visual, catering or other set-up requirements & ceilings height for each banquet room is 10 feet

Square Footage	1150	745	375	375	750	315	315	630
Dimensions	40’ x 28’9”	40’ X 19’	19’9” X 19’	19’9” X 19’	39’3” X 19’	19’9” X 16’	19’9” X 16’	39’3” X 16’
Doors	8’2” X 4’4”	8’2” X 2’6”	8’2” X 2’6”	8’2” X 2’6”	8’2” X 2’6”	8’2” X 2’6”	8’2” X 2’6”	8’2” X 2’6”
Price	1400.	900.	450.	450.	900.	325.	325.	650.

SUMMIT MEETING + BANQUET ROOMS



- **Million-dollar views** of English Bay, the North Shore Mountains, Stanley Park and/or downtown
- Located on the **31st floor**
- 4 wings, each with **3 walls of windows**
- Complimentary **Wi-Fi**
- Complimentary set-up and clean-up
- Sleek, ergonomic furnishings provided
- Motorized sun screens and blackout blinds to control lighting and the variety of lighting choices
- Individual temperature control systems
- Built-in ceiling speakers
- Lobby area ideal for registration desk
- Folding partitions in Baker + Arrowsmith and Cypress + Hollyburn

SUMMIT MEETING + BANQUET ROOMS

GARIBALDI ROOM*



Largest room, located on our West Wing

1150 sq. ft.

Maximum 100 guests

North, South + West facing windows that overlook English Bay, Stanley Park, the North Shore Mountains + downtown

BAKER + ARROWSMITH ROOMS*



Located on our South Wing

750 sq. ft. (total)

Maximum 60 guests or dividing into two breakout rooms for smaller groups

East, South + West facing windows that overlook English Bay, the City + Robson Street

SEYMOUR ROOM*



Located on our East Wing

745 sq. ft.

Maximum 80 guests

North, East + South facing windows that overlook the North Shore Mountains, English Bay + downtown

CYPRESS + HOLLYBURN ROOMS*



Located on our North Wing

630 sq. ft. (total)

Maximum 50 guests or dividing into two breakout rooms for smaller groups

North, West + East facing windows that overlook the North Shore Mountains + Stanley Park.

**Clear blue skies subject to change without notice. Incredible sunsets available upon request.*

AUDIO VISUAL EQUIPMENT

ITEM	COST		
Flip chart, markers included	25.		
Whiteboard	25.		
8-foot tripod screen	35.		
Wireless Microphone	125.		
LCD projector	260.		
DI Box	35.		
Up-lighting	300.		
8 Colours Available			
Podium	Complimentary		
Wi-Fi	Complimentary		
Socan fees	22.06	With dance floor	44.13
ReSound fees	9.25	With dance floor	18.51



The Society of Composers, Authors & Music Publishers of Canada and Re: Sound, The Canadian Not –For-Profit Music Licensing company dedicated to fair compensation for artist and recording companies for their performance rights, has licensing fees for each event held where live or recorded music is played. The fees are collected by the Hotel and then sent to SOCAN + Re: Sound. All music Tariff fees are charged based on the event.

Please note: All prices and taxes are subject to change without notice. Additional equipment can be ordered in.

